

Wish You Were Here

Words and Music by George Roger Waters and David Jon Gilmour



♩ = 60

N.C.

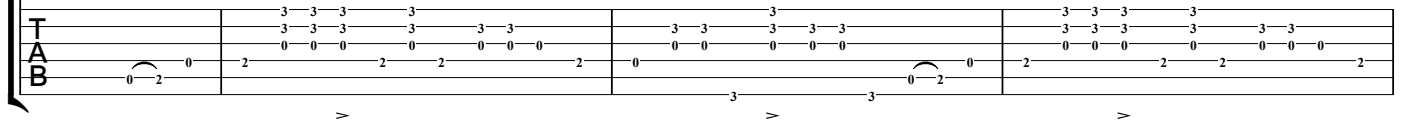
Em7

G

Em7



Tacet
(12-string part shown in cues)



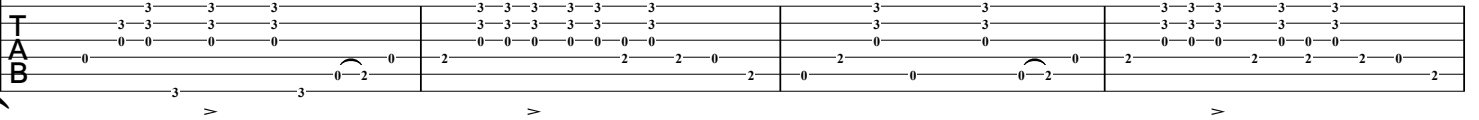
5

G

Em7

A7sus4

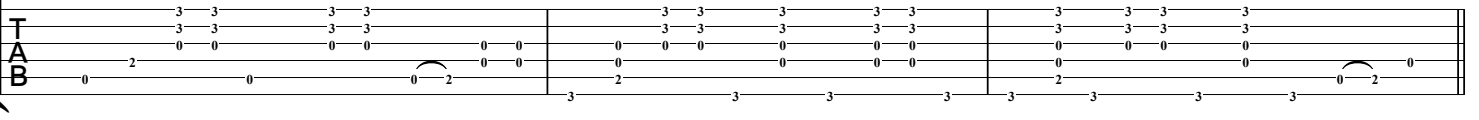
Em7



9

A7sus4

G



12

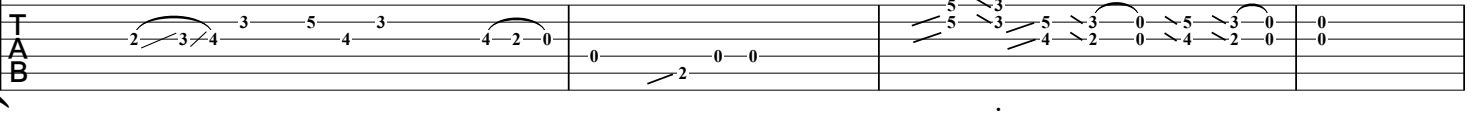
Em7

G

Em7

G

(Acoustic Guitar)



16

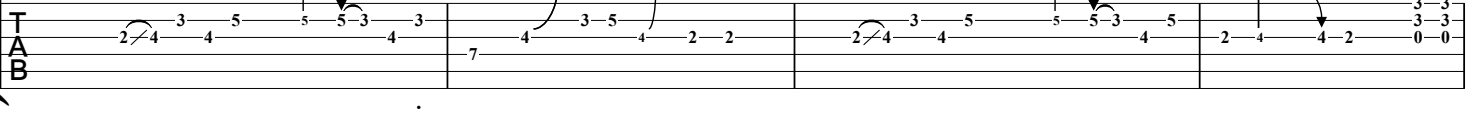
Em7

A7sus4

Em7

A7sus4

G



C/G

D/F#

So, _____ so you think you can tell _____ hea- ven from hell, _

Chord diagram for measures 20-22. Measure 20: C/G (x02333). Measure 21: C/G (x02333). Measure 22: D/F# (x20232).

TAB: 3 3 3 3 3 3 | 0 0 0 0 0 0 | 2 2 2 2 2 2 | 2 2 2 2 2 2

Am

G

D/F#

_____ blue skies from pain? _____ Can you tell a green field _____ from a cold steel

Chord diagram for measures 23-25. Measure 23: Am (x02020). Measure 24: Am (x02020). Measure 25: G (x02333).

TAB: 0 0 0 0 0 0 | 1 1 1 1 1 1 | 2 2 2 2 2 2 | 0 0 0 0 0 0 | 3 3 3 3 3 3 | 2 2 2 2 2 2 | 2 2 2 2 2 2 | 2 2 2 2 2 2

C

Am

G

rail? _ A smile from a veil? _____ Do you think you can tell? _____ Did they get you to trade _

Chord diagram for measures 26-28. Measure 26: C (x32010). Measure 27: Am (x02020). Measure 28: G (x02333).

(drums and bass enter)

TAB: 0 0 0 0 0 0 | 1 1 1 1 1 1 | 2 2 2 2 2 2 | 0 0 0 0 0 0 | 3 3 3 3 3 3 | 3 3 3 3 3 3 | 3 3 3 3 3 3 | 3 3 3 3 3 3

29 C/G D/F# Am

your her - oes for ghosts?_ Hot ash - es for trees?_ Hot air_ for a cool_

TAB

32 G D

breeze?_ Cold_ com-fort for change?_ Did you_ ex-change_

TAB

34 C Am G

a walk-on part_ in the war_ for a lead_ role in a cage?_

TAB

37 Em7 G Em7 G

Acoustic Guitar & Vocal scat in cue notes w/slide & open G tuning

TAB

41 Em7 A7sus4 Em7

TAB

44 A7sus4 G C

How I wish, _ how I wish you were here. _

TAB

47 D Am G

We're just two lost souls swim-ming in a fish bowl, _ year af- ter year. _

TAB

50 D/F# D C Am

Run-ning ov-er the same_ old ground, what have we found? _ The same old_ fears? _ Wish you_ were here. _

TAB

53 G Em7 (Play 2° only) G

Acoustic Guitar & Vocal Scat in cue notes w/slide & open G tuning

TAB

56 Em7 G Em7

TAB

59 A7sus4 Em7 A7sus4

TAB

62 G (Play 1° only) (2°) rit. Em7

TAB